



152a Stanwell Road  
Ashford TW15 3QR  
£1,250 Per Month

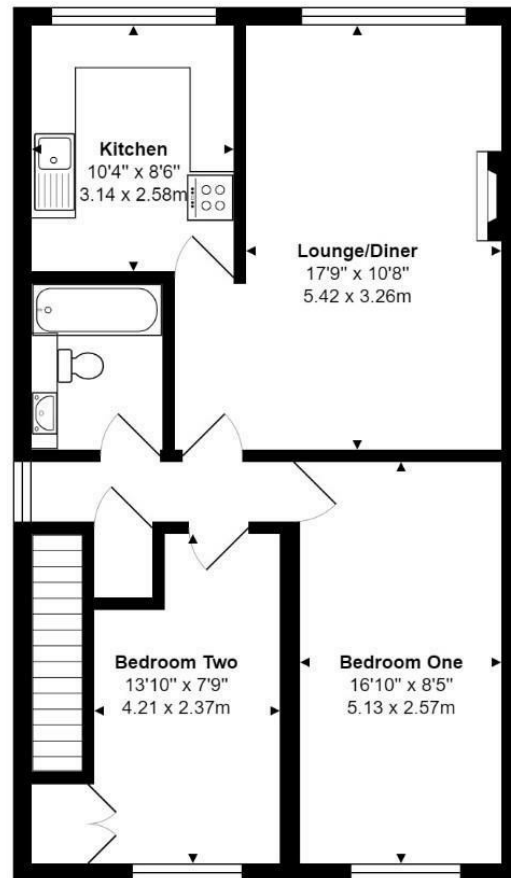


## 152a Stanwell Road, Ashford, TW15 3QR

A first floor maisonette located in a popular location close to local amenities, town centre and railway station. Entrance with stairs to first floor, hallway with storage and loft access. Rear reception room with garden views, modern fitted kitchen with appliances, two double bedrooms and a modern family bathroom. The property boasts; wood laminate floor to the lounge, gas central heating and double glazing throughout. To the side is a private garden with lawn and patio area, whilst the rear provides a garage in adjacent block, Available mid July 2021 on a part furnished or unfurnished basis.



## Floor Plan



## Area Map



## Features

- First Floor Maisonette
- Two Double Bedrooms
- Bathroom
- Garage in Adjacent Block
- Part Furnished/Unfurnished
- Own Private Garden
- Modern Fitted Kitchen
- Spacious Reception Room
- Double Glazing
- AVAILABLE MID JULY 2021

